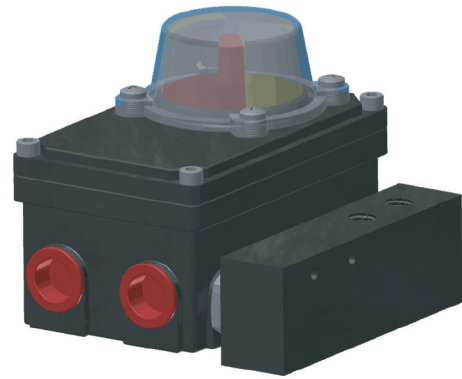


**TE+RK<sup>®</sup>**

LIMIT SWITCH BOX **MASTORK**

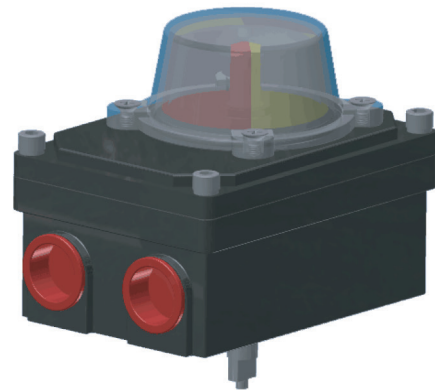
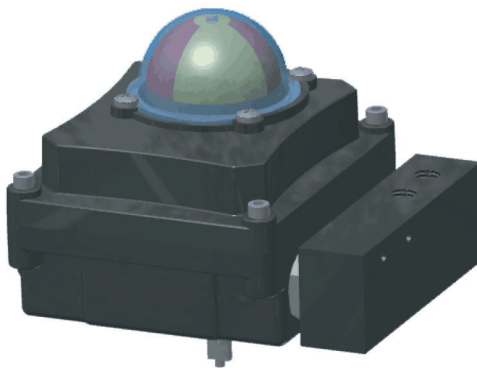
[mastork.mx](http://mastork.mx)

# Position Monitoring Switchbox



IP68 (50M @ 72 hrs tested by SGS)  
Solenoid valve option

IP68 & ExdIICT6 Explosion-prof  
Solenoid valve option



IP68 water -prof  
Ip68(50M @72 hrs tested by SGS)

IP68 & ExdIICT6 Explosion-prof  
Solenoid valve option

# EAC



## Position Monitoring Switch box

VTL Valve Position Monitoring (Limit Switch Box)

VTL Valve Position Monitoring (Limit Switch Box)

Material of construction

Aluminium Alloy Body: VTL-L,M,B,D, Series

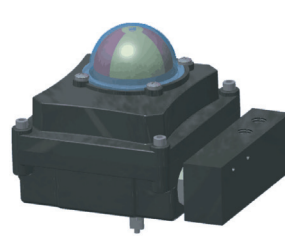
316SS Bpdy : SS Series



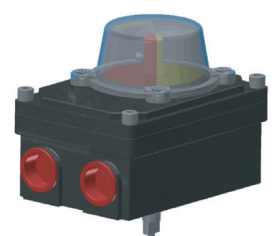
VTL-L  
IP68 water-proof  
IP68 ( 50 M@72 hrs tested by SGS)



VTL- M  
IP68 water-proof  
IP68 ( 50 M@72 hrs tested by SGS)

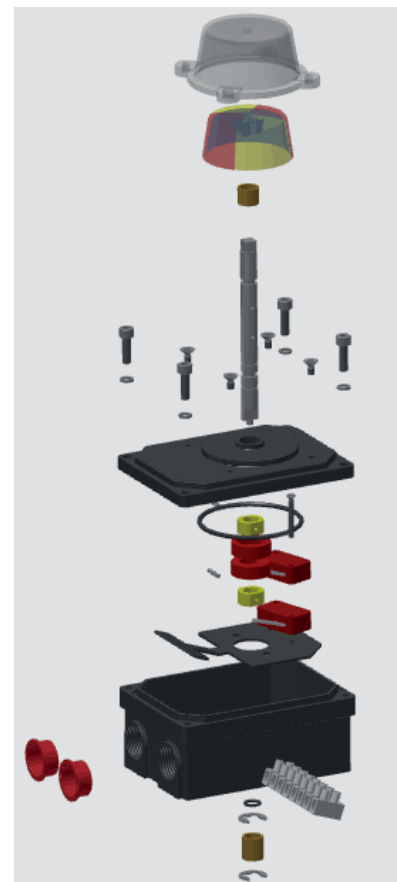


VTL- B  
IP68 / Exd II BT6  
Explosion-proof



VTL- DIP68 / Exd II CT6  
Explosion-proof

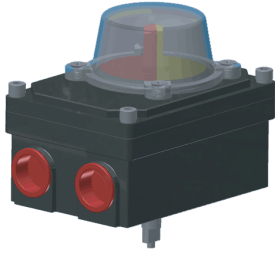
Housin	Low copper aluminium die-casting
Coating	Epoxy-Polyester
Sealing	NBR O-rings on each interface (dome indicator, Lower/ Upper Housing, Shaft)
Cams	Ply-Carbonate
Bushings	Bronze
Shaft	AISI 304 Stainless Steel
Earth Lug	Stainless Steel
Mounting Braket	PA66, AISI 304 Stainless Steel



# Position Monitoring Switch Box

## VTL Valve Position Monitoring (Limit Switch Box)

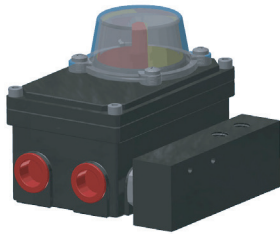
### VTL-L,M,D,B, Series General Specification



#### VTL-L Series, Weather-Proof

- Enclosure: Aluminum Die-casting, weather proof - IP68/NEMA 4 & 4X, IP68 water-proof
- Bolts on visual position Indicator
- Switches: 2 x SPDT mechanical switch or proximity
- Cable Entry: 2 x 1/2" NPT (std.). Option: M20, PG 13.5, PF 1/2", PT 1/2"
- Terminal Strip: 8 points (0.08 – 2.5mm<sup>2</sup>), Option: 8-16 points
- Easy mounting, Namur standard, stainless steel bracket & bolts or PA66 bracket

#### VTL-M Series, Weather-Proof



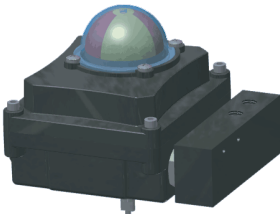
- Enclosure: Aluminum Die-casting weather proof - IP68/NEMA 4 & 4X Solenoid valve option
- Bolts on visual position Indicator
- Switches: 2, 3 or 4 x SPDT mechanical switch or proximity
- Cable Entry: N2P Tx O 1/2" Option: M20, M25, PF 3/4", PT 3/4"
- Terminal Strip: 8 points (0.08 – 2.5mm<sup>2</sup>), Option: 8-16 points
- Easy mounting, Namur standard, stainless steel bracket & bolts or PA66 bracket

#### VTL-D Series, Ex-Proof (EExdIICT6)



- Enclosure: Aluminum Die-casting, weather-proof, IP68/NEMA 4 & 4X & Explosion proof – EExdIICT6
- Bolts on visual position Indicator
- Switches: 2, 3 or 4 x SPDT mechanical switch or proximity  
Option: Potentiometer (0-1.5, 10K ohm), Position Transmitter (4-20mA DC)
- Cable Entry: 2 x 1/2" NPT (std.). Option: M20, M25, PF 3/4", PT 3/4"
- Terminal Strip: 8 points (0.08 – 2.5mm<sup>2</sup>), Option: 8-16 points
- Easy mounting, Namur Standard, stainless steel bracket & bolts or PA66 bracket

#### VTL-B Series, IP68 Water-proof, ExdIIIBT6 Ex-proof



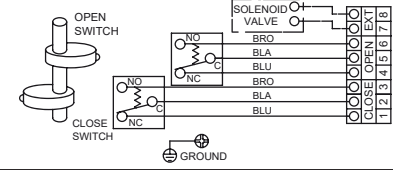
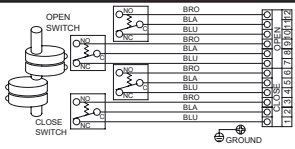
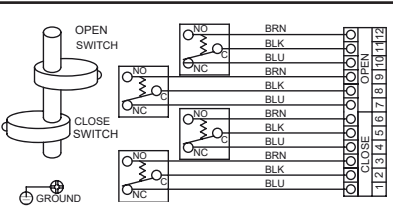
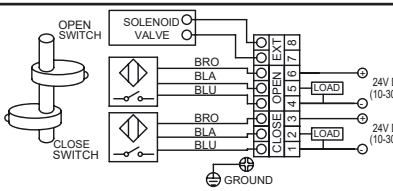
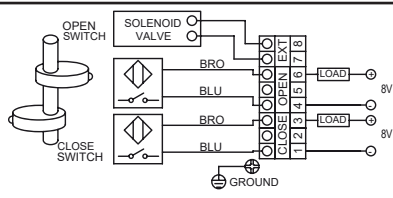
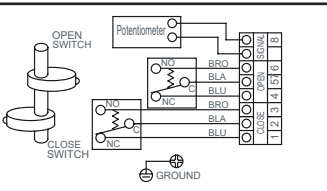
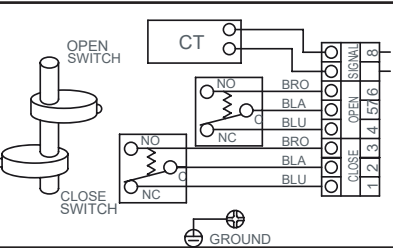
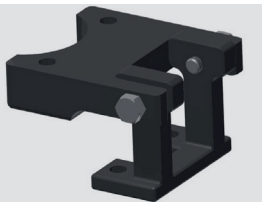
- Enclosure: Aluminum Die-casting, weather proof - IP68 Water-proof, ExdIIIBT6 Ex-proof
- Solenoid Valve option
- Bolts on visual position Indicator
- Switches: 2, 3 or 4 x SPDT mechanical switch or proximity
- Cable Entry: 2 x 1/2" NPT (std.). Option: M20, PG 13.5, PF 1/2", PT 1/2"
- Terminal Strip: 8 points (0.08 – 2.5mm<sup>2</sup>), Option: 8-16 points
- Easy mounting, Namur standard, stainless steel bracket & bolts

Note: A. Standard Specification: 1. Captive cover bolts. 2. Polyester powder coating (black color). 3. Ambient Temp.: -20 ~ +80°C  
B. The other painting & colors are available upon request

# Position Monitorin Switch Box

## VTL Valve Psition Monitoring (Limit Switch Box)

### Switches, Wiring and Bracket(VTL-L,M,B,D series)

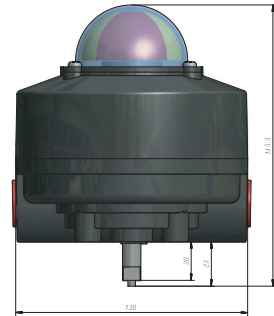
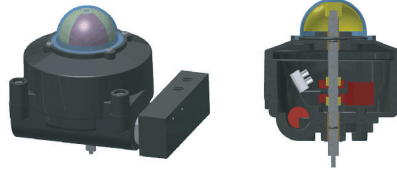
<p>2-SPDT mechanical switches            Rating : 16A 1/2HP 125/250VAC,            0.6A 125VDC, 0.3A 250VDC            approved by UL, CSA</p>	
<p>4-SPDT mechanical switches            Rating : 5A 125 VAC LT130            0.6A 125VDC            approved by UL, CSA</p>	
<p>2-DPDT mechanical switches            Rating : 10A 125 or 250VAC            2A 480VAC            1/8HP 125VAC, 0.25HP 250VAC            0.5A 125VDC, 0.25A 250VDC            approved by UL, CS</p>	
<p>Autonics proximity sensors            PS 17-5DNU(NPN, PNP), 3-wire            Voltage rating : 10~30VDC            Sensing distance : 5mm            Ambient temperature : -25~+70°</p>	
<p>P &amp; F proximity sensors            NJ2-V3-N(Intrinsic safe, 2-wire)            Voltage rating : 8V DC            Sensing distance : 2mm            Ambient temperature : -25~+100°C</p>	
<p>Potentiometer            Providing 0-1K ohm output signal,            Options: 0-5K or 10K ohm</p>	
<p>Position Transmitter            Providing 4-20mA DC(or 0~1K ohm)            output signal as feedback, 15~28VDC            loop power(24V DC input power)            Load impedance : 0~600 Ohm,            Max output : 35mA DC            Adjustment : Zero and span</p>	
	<p>Standard bracket provided together with switch box(included)            Universal</p>

# Position Monitorin Switch Box

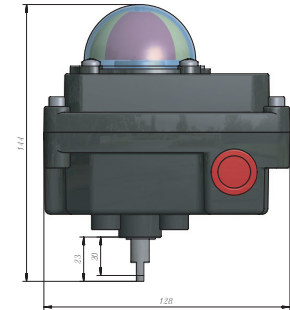
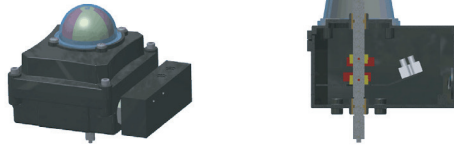
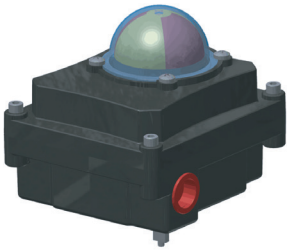
## VTL Valve Psition Monitoring (Limit Switch Box)

### Dimension

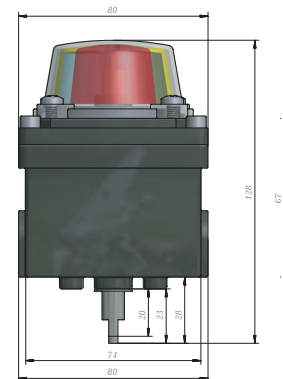
VTL - D200



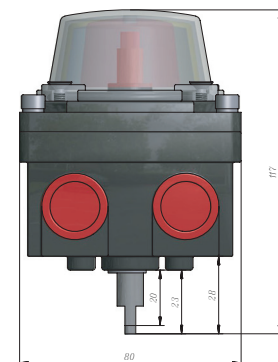
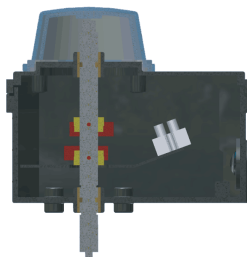
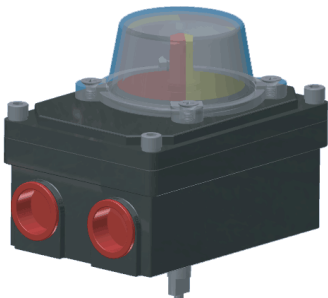
VTL - B200



VTL - M200



VTL - L200



# Position Monitorin Switch Box

VTL - L - 1 - P

Enclosure Type: \_\_\_\_\_

- L series(Aluminum Die-Casting Housing,IP68 Water-proof)
- M series(Aluminum Die-Casting Housing,IP68 Water-proof)
- D series(Aluminum Die-Casting Housing,IP68/ExdIICT6 Explosion-proof)
- B series(Aluminum Die-Casting Housing,IP68/ExdIIBT6 Explosion-proof)

Switch Type \_\_\_\_\_

Mechanical Type Switch	Inductive Proximity Sensor	Reed type sensor	Interface	Bracket Material
200 – 2 x SPDT	221: NCB2-V3-NO (ExiallCT6) 8VDC	330:PM-3-SD 24VDC	1: NPT1/2	S: Stainless Steel
300 – 3 x SPDT	222: NJ2-V3-N (ExiallCT6) 8VDC	331:OM-2-N-O 220VAC or 24VDC	2: G1/2	P: PA66
400 – 4 x SPD	223: NJ4-12GK-SN (ExiallCT6) -50°C ~ 100°C	332:MS27	3: M20 x 1.5	
210 – 2 x DPDT	224:SJ3.5-N (ExiallCT6) 8VDC		4: NPT3/4	
310 – 2 x SPDT+Potentiometer (0-1kΩ)	225:SJ3.5-SN (ExiallCT6) -50°C ~ 100°C		5: M25 x 1.5	
410 – 2 x SPDT + Position Transmitter (4-20mADC output)	226:NBB3-V3-Z4 5 ~ 60VDC			
	227:PSN17 – 5DNU			

**TOORK®**

[mastork.mx](http://mastork.mx)

